

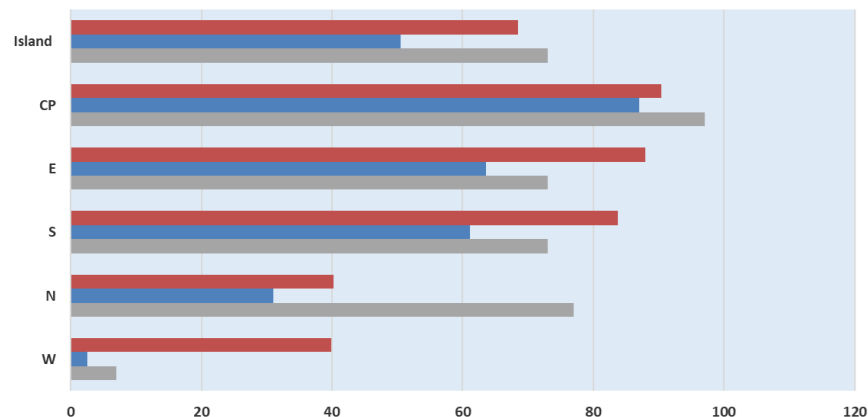
## Mauritius Meteorological Services

### Mean Rainfall for 01-15 December 2024 updated 20 December 2024

#### Mauritius

Below normal rainfall was recorded for the first fortnight of December 2024, amounting to 50 mm which represents 74 % of the long-term mean.

The highest rainfall amount and percentage recorded were over the Central Plateau



	W	N	S	E	CP	Island
■ First Half LTM (1991-2020) for Dec Rainfall (mm)	40	40	84	88	90	68
■ Actual Mean rainfall for 1st half Dec 2024 (mm)	3	31	61	64	87	50
■ Percentage(% of Long Term Mean for December 2024)	7	77	73	73	97	73

#### Outer Islands

		Amount (mm)		
Stations		Actual Rainfall	LTM Rainfall	% of LTM
Rodrigues	Pointe Canon	23	32	72
	Plaine Corail	26	42	62
	Citronelle	36	46	78
Agalega		269	104	258
St Brandon		-	-	-

Below normal rainfall was recorded over Rodrigues,

Very wet condition prevailed over Agalega. The excessive rainfall recorded was due to passage of ITC Chido on the 11 and 12 December 2024

Currently data is not available for St Brandon

*The right of publication in print, electronic and any other form is reserved by the Meteorological Services. Any part of this document may be reproduced provided complete source is acknowledged or after authorization from:*

**Acting Director, Meteorological Services,  
St Paul Road, Vacoas.**

**Tel: 6861031/32, Fax: 6861033, email: [meteo@intnet.mu](mailto:meteo@intnet.mu)**

Updated on: 20 December 2024